



Treatment CreamColor

- ★ Please read instructions carefully before using it as directed.
- ★ Product can cause an allergic reaction that, in rare cases, may be severe.
- ★ Please perform a skin allergy test before each use of the product.

Caution for Use

- 1. DO NOT USE:**
- 1 If you have ever experienced an allergic reaction to this or any other hair colorant product.
  - 2 If you have ever experienced hives, itchiness, rash, or redness, or felt unwell with symptoms such as breathing difficulties or dizziness, either during or just after coloring your hair.
  - 3 If you have ever had an abnormal reaction to the skin allergy test.
  - 4 If you have sensitive scalp or skin (e.g. during or when recovering from illness; during menstruation or pregnancy).
  - 5 If you have an inflammation, cut or skin problem on head, face or neck.
  - 6 If you have ever suffered from kidney diseases, blood disorders or other such medical condition.
  - 7 If you have symptoms of illness (slight fever, fatigue, palpitations, shortness of breath, tendency toward bruising or bleeding, have heavy or prolonged menstruation or other bleeding).

- 2. Before usage :**
- 1 Before each use of this product, perform a skin allergy test 2 days (48 hours) in advance. The skin allergy test indicates whether you are prone to allergic reactions from hair colorant ingredients. Check the test site twice-once, 30 minutes after applying the test cream mixture and again after 48 hours. Even if you have colored your hair many times before with no reaction, changes in body conditions may cause a reaction to occur. So, perform this test each time before use without fail.
  - 2 This product only intended for hair on the head. Do not use on anywhere else.
  - 3 Do not use on eyelashes or eyebrows as cream may drip into your eyes.
  - 4 Do not use immediately after shaving as skin may have small cuts and are prone to irritation.
  - 5 If you have just permed your hair, allow at least one week of interval before using this product as it may result in hair damage or hair discoloration. Similarly, after hair coloring, at least one week interval should be given before perming to avoid hair damage or hair discoloration.

- 3. When coloring your hair :**
- 1 Use cream mixture immediately after mixing.
  - 2 Use in a well-ventilated area.
  - 3 Wear the gloves provided.
  - 4 Do not wet your hair before product application nor bathe during product application. Perspiration or water droplets may cause cream to get into your eyes.
  - 5 Avoid getting the cream mixture onto the face or neck. If it happens, wash off immediately with water.
  - 6 Avoid contact between your eyes and the cream mixture, the rinsing water as it may cause severe pain. In some cases eye damage can occur (e.g. inflammation of the cornea). **DO NOT RUB** your eyes if cream mixture or its rinsing water comes in contact with them. Rinse eyes immediately with cold or lukewarm water for at least 15 minutes and seek medical attention immediately.
  - 7 During application, if you experience any skin abnormalities such as rash, redness, inflammation, itching, strong irritation, or if symptoms such as hives, breathing difficulties or dizziness appear, rinse the cream off thoroughly and seek medical attention immediately.
  - 8 If you experience any abnormalities after application, seek prompt medical attention.

- 4. Storage Advisory**
- 1 Keep out of reach of children. Product is hazardous if ingested.
  - 2 Store away from high temperatures or direct sunlight.

\*Product not intended for children use.  
★ Be careful not to let product mixture come in contact with clothing, floors, carpets or walls as it will cause permanent staining.

Caution!

DO NOT USE

If you have ever experienced an allergic reaction to a hair colorant product or if you obtained abnormal results from the skin allergy test.

For inquiries about this product, (Monday – Friday, 8:30am – 5:30pm) Malaysia, call: 1800 88 4588 Alternatively, visit <http://web.kao.com/my/liese> Singapore, call: 6396 0400 Alternatively, visit <http://web.kao.com/sg/liese>

Skin Allergy Test Procedure

The Skin Allergy Test indicates whether you are prone to having an allergic reaction to the product. Even if you may have colored your hair many times before without experiencing any reaction, changes in body conditions may cause a sudden reaction to occur. So perform the test, without fail each time, 48 hours before use.

STEP 1 Have the following items ready.

- 1 Cream 1
  - 2 Cream 2
  - 3 Tray
  - 4 Cotton swab
  - 5 Cotton pad or tissue paper
- Please provide these items yourself

STEP 2 Prepare the mixture.

- Remove the cap of Cream 1 tube and pierce a hole in the tube using the spike found in the outside top center of the cap. Ensure that the spike is inserted deep enough to pierce through. Squeeze out a drop of cream about the size of a pea onto the tray.
- Squeeze out a similar amount from Cream 2 Tube.
- Mix both drops of cream together with a cotton swab.

STEP 3 Apply mixture onto inner side of arm and leave for 48 hours.

- When the test mixture is ready, use the tip of the cotton swab to apply a thin round patch about the size of a \$1 coin on the inner side of your arm and let it dry naturally.
- It is important to leave the spot on for 48 hours.
- ★ The part of your skin which you have applied to may become brown, but after the patch test this will disappear after a few days of normal bathing.
- ★ Be careful to avoid test mixture spot to come in contact with your clothing before it dries completely.
- ★ If the spot does not dry within 30 minutes after application, gently blot excess with a tissue.
- ★ To ensure that the result is accurate please do not moisten, scratch the test area or place any seals over it for 48 hours. It is advisable not to bathe or shower during the test. If you must bathe, make sure you do not get the spot wet.

STEP 4 Observe test area twice.

- 1) 30 minutes after application
  - 2) 48 hours after application
- ★ If rash, redness, itchiness, blistering, irritation or other skin abnormality occurs, do not rub with your hands. Wash off test mixture immediately and DO NOT use the product.
  - ★ If any of the above said reactions are noticed during test period, even if it is before the end of 48 hours, STOP TEST immediately. Wash mixture off and DO NOT use the product.

STEP 5 If there is no abnormal reaction after 48 hours, proceed to use the product.

If the Skin Allergy Test results in any abnormalities, please contact our product inquiry hotline.

An allergic reaction to the product consists of itchiness, swelling, redness or rash found mostly on areas like the scalp, hairline, forehead, face or neck. In some instances, there may only be itchiness. In presence of such symptoms, no matter how mild or unnoticeable, if usage is proceeded or repeated, you may run the risk of a severe, sudden allergic reaction (hives all over the body, breathing difficulties, etc.) It should be noted that if ANY of the said symptoms (even if it is only itchiness that is experienced currently or before, regardless of its severity) is experienced, **DO NOT USE** this product.

Preparation before Application

Check the items you need

- Items included in the box
- Cream 1
  - Cream 2
  - 3-in-1 Comb Brush
  - Instructions
  - Tray
  - Gloves

Items not included in the box

- A large towel or cape that you don't mind staining.
- Floor covering such as newspaper
- Mirror
- Two elastic bands
- Oil-based skin cream
- Clock
- Towel
- Cotton pad or tissue paper

Getting your hair ready

- ★ Shampoo the day before you color your hair. If your hair has large amounts of hair styling agents, products such as temporary hair color (eg. color foam or hair mascara) or metallic powder on it; rinse thoroughly and take care not to damage your scalp.
- ★ If you wash your hair on the day you color, dry your hair thoroughly before application to avoid dripping of colorant and weakening of its effect.
- ★ The color may fade if you have a perm after coloring your hair. Allow at least one week interval between perming and coloring of hair.
- ★ If you have long or permed hair, it is recommended that you comb your hair thoroughly to remove tangles before using the product.

- Change into clothing you do not mind staining and wrap a towel around your neck.
- To easily remove any cream mixture that gets in contact with skin, apply a thin layer of oil-based skin cream to your hairline, ears, forehead and neckline etc. Ensure that oil-based skin cream does not get onto the hair, as it may weaken the coloring effect.
- ★ If cream mixture gets in contact with skin or dripping occurs, wipe them off immediately with a damp cotton pad or tissue paper.

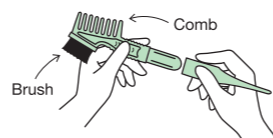
- Caution!**
- Do not use product prior to important engagements or outings. An allowance of at least 2-3 days is recommended prior to any of these events to ensure any staining on the skin disappears in time.
  - Remove glasses, contact lenses, earrings, necklaces, rings and other jewelries before use.
  - To avoid staining the floor with the cream, spread a newspaper or other cover on the floor before use. (Colorant cannot be removed)
  - Avoid taking a bath during application.
  - Do not use metal combs or hairpins.

- Do not mix this product color number with other color numbers. Mixing two different colors will not result in a balance hybrid of the colors.

HOW TO USE

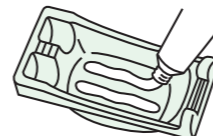
- 1 Prepare the cream mixture before coloring \* Color of the mixture does not reflect the resultant hair color

★ Assemble the 3-in-1 Comb-Brush firmly.



\* Once assembled, it cannot be disconnected.

- 1 Squeeze equal amounts of Cream 1 & Cream 2 onto the tray.



- 2 Mix well with the 3-in-1 Comb-Brush.



- 3 Put on gloves. Use a rubber band to secure it at the wrist to prevent it from slipping.



**Amount of cream mixture required for the frontal half**

2 rows of Cream 1 & 2; length of each row to be that of the tray. (Total amount equates to double the length of the tray)

\* Amount required is an estimation; it will vary based on size of the area and amount of gray hair.

**How to use the 3-in-1 Comb Brush**

- Divide hair with the tip of the Comb Brush and use the Brush to apply the cream mixture as shown.
- Then, use the Comb to ensure even coverage.

- Caution!**
- ★ Use cream mixture immediately after mixing. Mixture will no longer be effective after 60 minutes.
  - ★ The color of tip or the last portion of cream 1 may turn black or brown in time however this will not affect the hair color turnout.
  - ★ Close the caps of Cream 1 (green) and 2 (white) tightly after use.

One box is enough to color the entire head with short hair length (shoulder and above).

Be sure to perform a skin allergy test every time before use. Read "Preparation before application" carefully.

- 2 Applying the cream mixture to your hair \* Be careful not to hurt your scalp when combing.

How to color the entire head

- 1 Apply the cream to the front part of your hair with the Brush.

Apply more cream mixture on areas with more gray hair.



Apply the cream onto the frontal part of your head.

- 1 Divide your hair with the tip of 3-in-1 Comb-Brush and use the Brush to apply cream mixture to the roots of a hair-section of about 2cm width.
- 2 Add more cream and spread it out towards the tips of your hair.
- 3 Take another section of your hair (of same width) and repeat steps 1 and 2.

- 2 Apply the cream onto the back part of the head with the 3-in-1 Comb Brush.



Apply the cream at the nape of neck.

Using the tip of the Comb Brush, section your hair from nape up to the top of your head. Apply the cream mixture from the roots and spread it towards the tips.

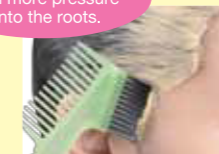
- 3 Spread cream over the entire head with the 3-in-1 Comb Brush.



Ensure not comb away the cream from your hair and be careful not to hurt the scalp or hair.

- 4 Apply more cream on areas with more gray hair.

Apply more cream with more pressure onto the roots.



Ensure that the cream mixture is thoroughly applied to your hairline, parting, hair whorl, and hair at the nape of your neck.

- 5 Leave on for about 15 minutes
- Q Is there any cream mixture on areas other than your hair?
- ▶ Wipe off any cream mixture found on your face, neck, ears or nape of your neck and arms.
- \* The longer the cream stays on, the more difficult it is to remove.  
\* It is recommended to leave the cream on for 5-10 minutes longer for thick and coarse hair.  
\* Final color turnout will differ, depending on the original hair color and the amount of gray hair.

How to color partially

Even if you are using this product for the second time, be sure to perform the skin allergy test.

Tip

\* If the cream is applied on the hair that already has been colored, the result may be darker. You should start with the roots of the hair.

- 1 Apply to the newly grown part of your hair with the Brush. Apply a generous amount of the cream at the roots of the new hair.

- 2 Leave the cream on the hair for about 10 minutes.

\* It is recommended to leave 5-10 minutes longer for thick and coarse hair.

- 3 Spread over the entire hair.

In order to even out the hair color, use the Comb to spread the cream from the roots to the rest of the hair.

- 4 Leave the cream on your hair for about 5 minutes.

How to color targeted areas with gray hair

- 1) Apply a generous amount of cream mixture to areas with more gray hair.
- 2) Spread through hair with the Comb.
- 3) Leave on for about 15 minutes.

\* For more details, refer to portions of this instruction leaflet "How to color your entire head" and "How to color partially"

3 Rinse your hair thoroughly, then finish with shampooing

- 1.) After the leave-on time, rinse off thoroughly with water.
  - 2.) Shampoo your hair thoroughly twice.
- Ensure that rinsing water does not get in contact with your eyes.
  - Hair conditioner or hair treatment may be used according if preferred.

★ Dry hair thoroughly after coloring.  
★ To prevent staining on clothing, hats and pillow cases and other head articles, avoid wearing the mentioned in the following cases –

- When your hair is still wet due to heavy perspiration, rain, swimming, hair wash, or after use of hair care products.
- When large amounts of hair care products are used, e.g hair tonic, hair liquid and styling mousse.

For repeated or continued use of remaining product

- \* Store remaining cream in tubes with tubes capped tightly.
- \* There may be little color turnout with just one-time application for light colors however the turnout will improve with repeated usage.
- \* Re-coloration is recommended at least 1 month later to prevent hair damage. To avoid uneven results from re-touching in some areas, it is recommended to color the entire head approximately every 3 months.

**Caution** Unused cream mixture will lose its coloring effects. Discard the unused mixture.

Within 20 minutes

Around 10 minutes

Around 10 minutes

Within 20 minutes

Within 20 minutes

Around 15 minutes